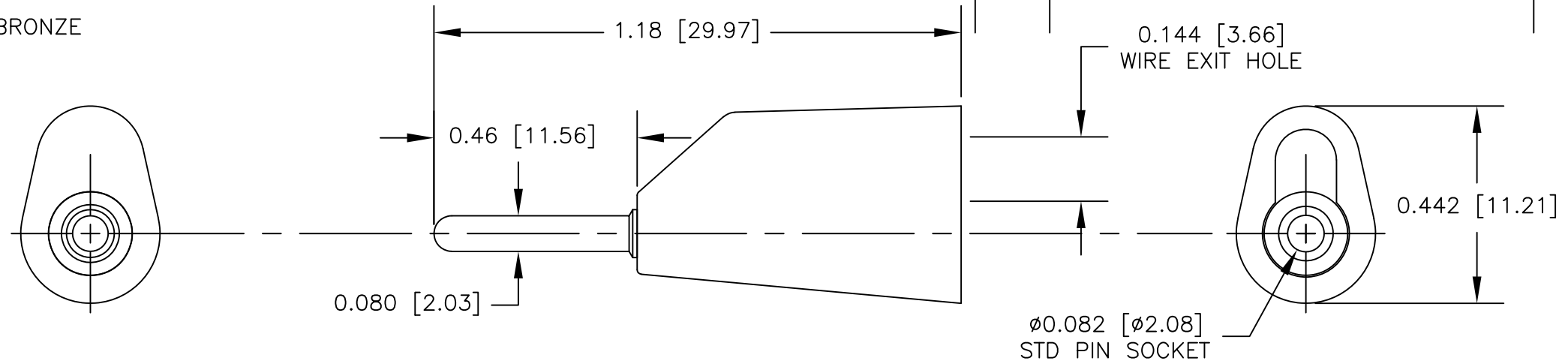
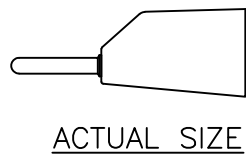
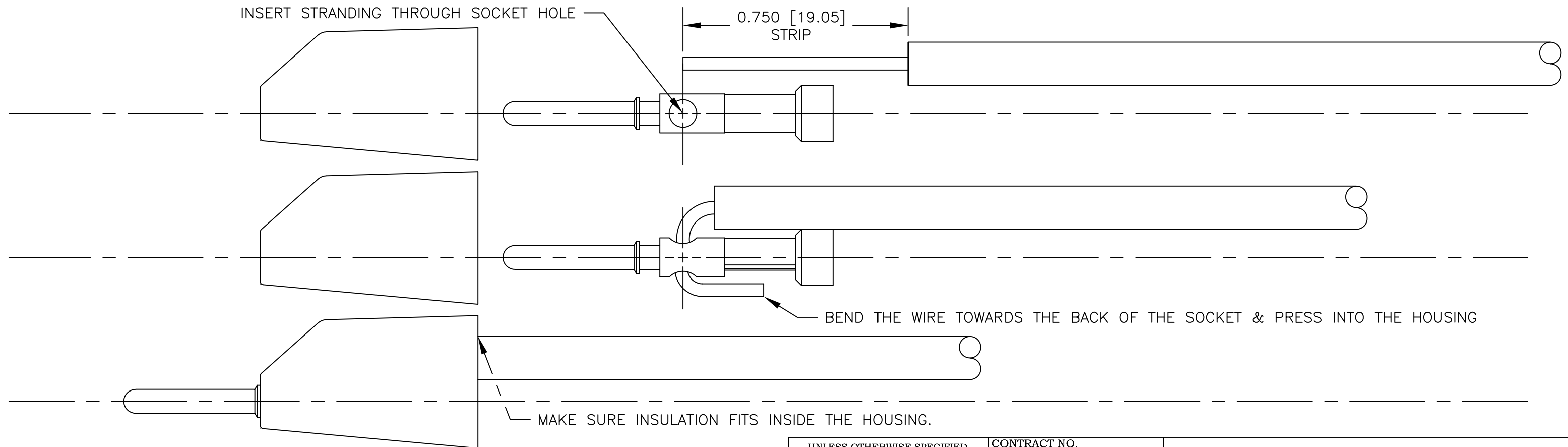


NOTES: UNLESS OTHERWISE SPECIFIED

1. CONSTRUCTION:  
 HOUSING: MOLDED NYLON AVAILABLE IN ALL TEN COLORS  
 FRAME: NICKEL PLATED BRASS  
 SPRING: SILVER PLATED BeCu OR PHOSPHOR BRONZE
2. PERFORMANCE:  
 MAXIMUM CURRENT: 10 AMPS  
 MAXIMUM VOLTAGE: 3500 VRMS  
 MAXIMUM TEMPERATURE: 200°F (93°C)



### ASSEMBLY INSTRUCTIONS



UNLESS OTHERWISE SPECIFIED DIMENSIONS ARE IN INCHES TOLERANCES ARE: FRACTIONS DECIMALS ANGLES ± N/A .XX ± N/A ± N/A .XXX ± N/A	CONTRACT NO.		<b>E-Z-HOOK</b> DIVISION OF TEKTEST INC. ARCADIA, CA 91006 U.S.A.	
	APPROVALS	DATE		
MATERIAL SEE NOTE	DRAWN R.L.	7/17	DESCRIPTION STK STD PIN PLUG	
FINISH SEE NOTE	APPROVED BY		SIZE <b>B</b>	CODE IDENT NO. <b>08505</b>
DO NOT SCALE DRAWING			DRAWING NO. <b>9259</b>	REV.
			SCALE 3:1	SHEET 1 OF 1