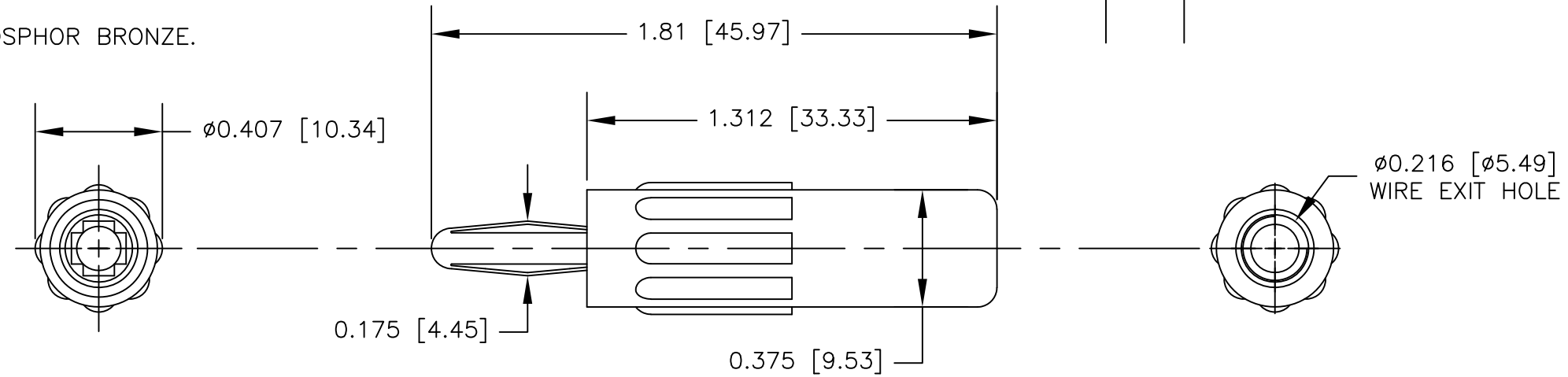


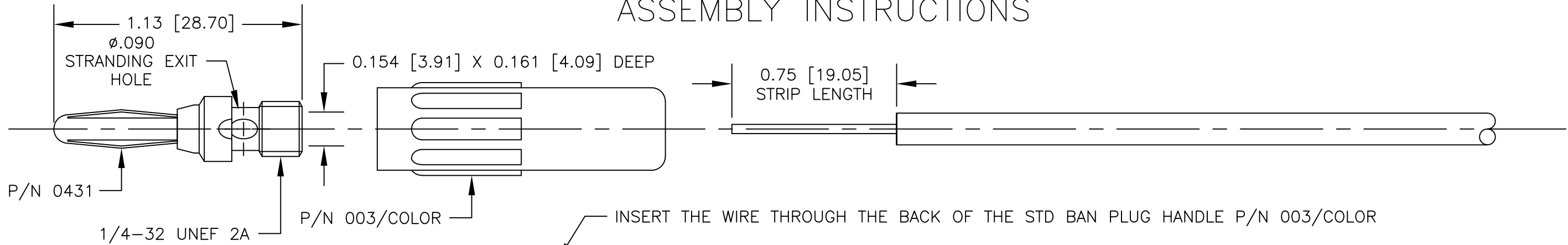
NOTES: UNLESS OTHERWISE SPECIFIED

- CONSTRUCTION:
 HOUSING: MOLDED ACETAL. AVAILABLE IN BLK & RED
 FRAME: NICKEL PLATED BRASS.
 CONTACT: NICKEL PLATED BeCu OR PHOSPHOR BRONZE.
- PERFORMANCE:
 MAXIMUM CURRENT: 15 AMPS
 MAXIMUM VOLTAGE: 3500 VRMS
 MAXIMUM TEMPERATURE: 200°F (93°C)

LTR	REVISIONS		DATE	APPROVED
	DESCRIPTION			



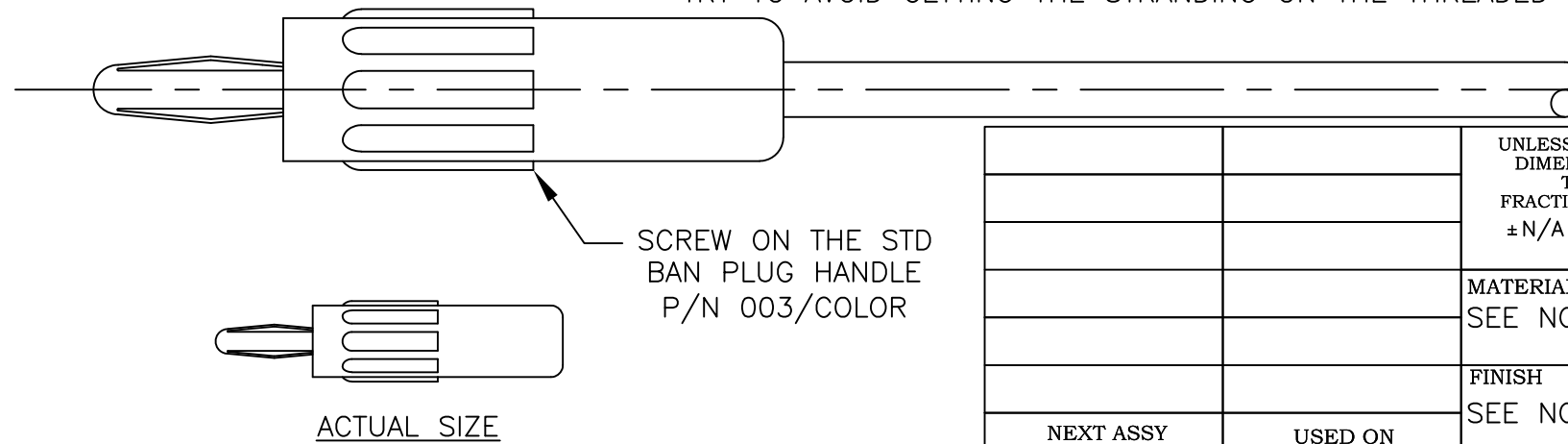
ASSEMBLY INSTRUCTIONS



INSERT THE WIRE THROUGH THE BACK OF THE STD BAN PLUG HANDLE P/N 003/COLOR

INSERT THE WIRE THROUGH THE WIRE EXIT HOLE OF THE STD BAN PLUG P/N 0431. PUSH THE STRANDING THROUGH THE STRANDING EXIT HOLE. WRAP THE STRANDING IN THE SAME DIRECTION AS THE THREADS.

 TRY TO AVOID GETTING THE STRANDING ON THE THREADED SECTION. THIS WILL CAUSE SOME OF THE STRANDS TO BREAK OFF.



SCREW ON THE STD BAN PLUG HANDLE P/N 003/COLOR

UNLESS OTHERWISE SPECIFIED DIMENSIONS ARE IN INCHES TOLERANCES ARE: FRACTIONS DECIMALS ANGLES ± N/A .XX ± N/A ± N/A .XXX ± N/A		CONTRACT NO.		E-Z-HOOK DIVISION OF TEKTEST INC. ARCADIA, CA 91006 U.S.A.
MATERIAL SEE NOTE		APPROVALS DRAWN R.L.	DATE 4/17	
FINISH SEE NOTE		APPROVED BY		DESCRIPTION STANDARD BANANA PLUG W/HEAVY DUTY HANDLE
NEXT ASSY	USED ON	SCALE 2:1		SIZE B
APPLICATION		DO NOT SCALE DRAWING		CODE IDENT NO. 08505
				DRAWING NO. 9214
				REV.
				SHEET 1 OF 1