

DRG. No.

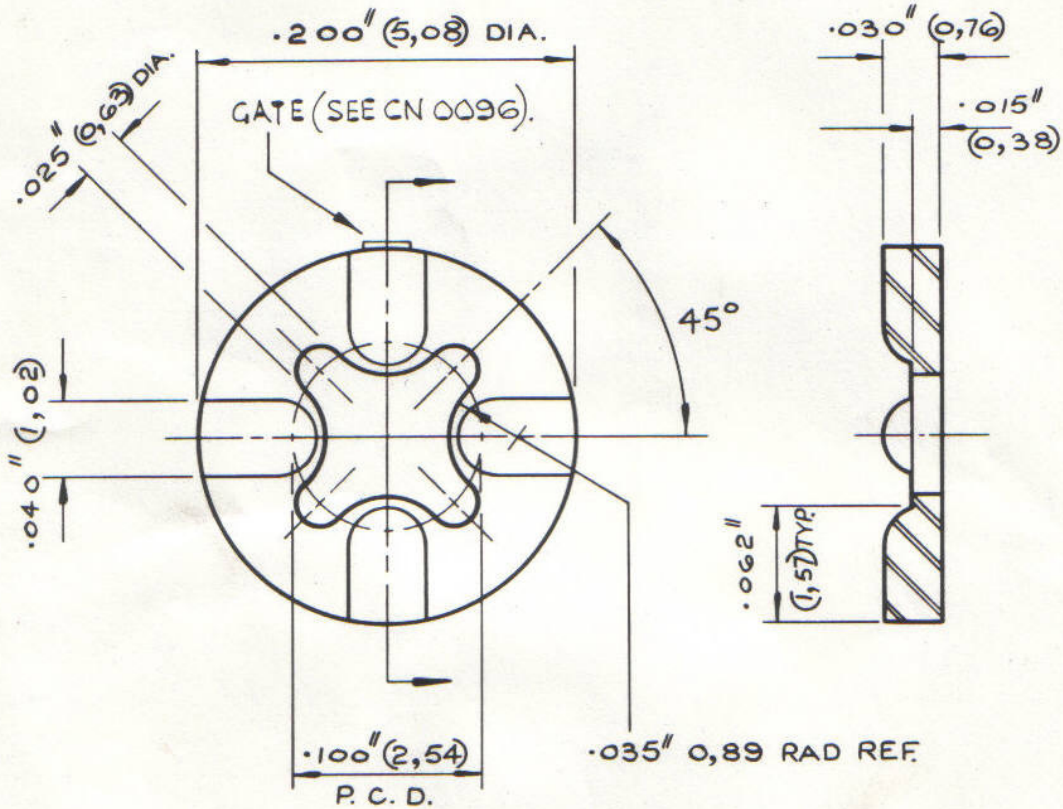
A 18-1014.

FOR EXPLANATION OF DIMENSIONING, ETC. SEE B.S.308

REMOVE ALL BURRS & SHARP EDGES.

A RADIUS OR CHAMFER .02 (MAX.) IS PERMITTED IN CORNERS OF BLIND HOLES, RECESSES & STEPS.

THIRD ANGLE PROJECTION



				Type No	Rev No	Material.
5.1.73	E	CN No 0096	RN	T018-014D	J18-1014D	A1406.
DATE	CHANGES					
13-9-73	A	RE-DRAWN METRIC ADDED.		TOLERANCE	DRAWN	B. LANE
8-3-74	B	TOLS. AMENDED ±.005" WAS ±.010"		±.005" (0,13) U.O.S.	TRACED	
14-1-71	C	MATERIAL AMENDED.		MATERIAL	CHECKED	
14-3-78	D.	DRG No was A1204. Rev Pt No Added. CM.			DATE	13-9-73
TITLE TRANSISTOR MOUNTING PAD				SCALE: 10-1	DRG. No.	
				DIMS. INCHES (mm)	A 18-1014.	

**JERMYN INDUSTRIES**

VESTRY ESTATE, OTFORD, NR. SEVENOAKS, KENT.

C.A.F.L. 3547/8

A SIZE.